

INSTRUMENT APPROACH CHART - ICAO PLAN VIEW SCALE: 1:350 000

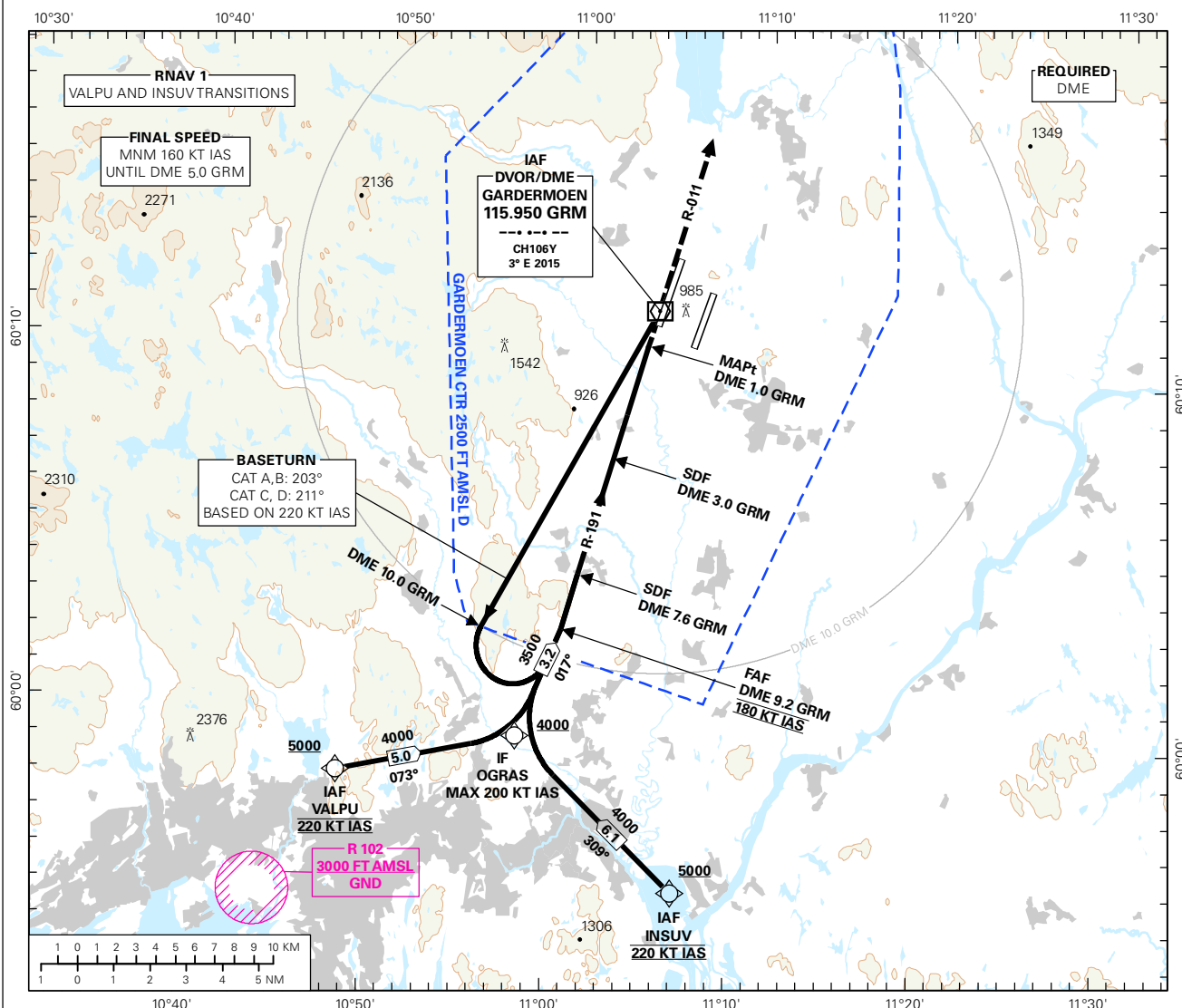
OSLO

GARDERMOEN

VOR RWY 01L

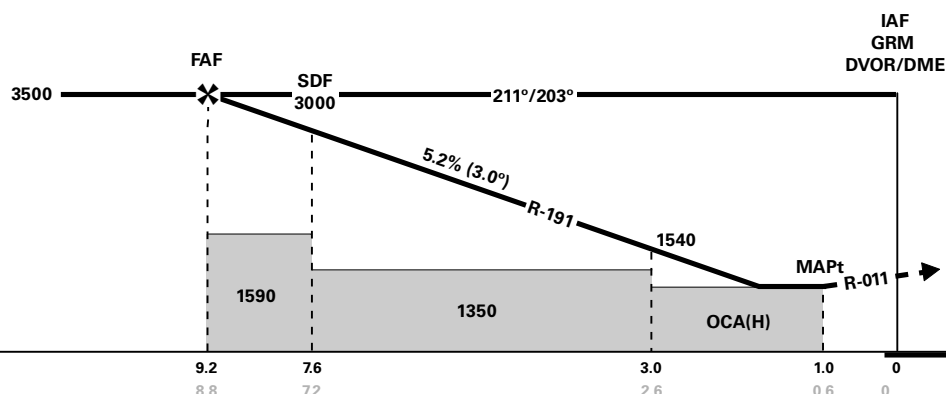
TRANSITION ALTITUDE
7000

	ATIS: 126.125	AD ELEV: 681		
	APP: 118.475 120.450	THR ELEV: 655	DIST IN NM	
	DIR: 136.400 (119.975)	HGT RELATED TO THR RWY 01L	ELEV, ALT AND HGT IN FT	
	FIN: 128.900	CIRCLING HGT RELATED TO AD ELEV		
	TWR: 118.300 (118.700)	BEARINGS ARE MAGNETIC - VAR 2.8 ° E (2015)		
	GND: 121.600			



DIST TO GRM	9	8	7	6	5	4	3	2
ALT (HGT)	3450 (2795)	3130 (2475)	2810 (2155)	2490 (1835)	2180 (1525)	1860 (1205)	1540 (885)	1220 (565)

PROCEDURE OFFSET: 2°



MISSED APCH:
CLIMB ON R-191 GRM TO GRM.
CONTINUE CLIMB ON R-011
GRM TO 5000. EXPECT
VECTORIZING BY OSLO APP.

RCF:
CLIMB ON R-011 GRM TO 5000.
AT DME 20.0 GRM, TURN LEFT
DCT GRM FOR NEW INSTRUMENT
APCH.

CAT OF ACFT		A	B	C	D	FINAL APCH	DIST FAF - MAPt: 8.2					
OCA(H) STRAIGHT - IN		1000 (345)	1020 (365)	1040 (385)	1060 (405)		SPEED	KT	70	90	120	150
		-	-	-	-	TIME	MIN:SEC	07:01	05:28	04:06	03:17	02:44
		-	-	-	-	ROD	FT/MIN	375	480	640	800	960
CIRCLING		1280 (599)		2040 (1359)	2250 (1569)							

NOTE: CIRCLING W OF RWY ONLY.

CHANGES: SPEED RESTRICTIONS.

Avinor

17 SEP 2015

THIS PAGE INTENTIONALLY LEFT BLANK